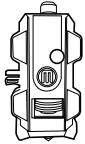
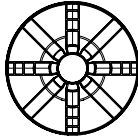


# MakerBot Replicator+ QUICK START GUIDE

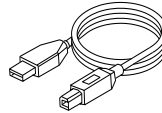
## 1 CHECK BOX CONTENTS



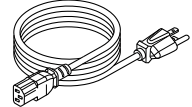
MakerBot® Replicator®  
Smart Extruder+



Large MakerBot  
PLA Filament spool



USB A-to-B cable



Power cord

## 2 SET UP USING OUR APP

### Go to [MakerBot.com/GetStarted](http://MakerBot.com/GetStarted)

- Download our app to your computer or mobile phone.
- Download the Replicator+ User Manual and review safety information.
- If you're unable to go online, turn to the reverse side for offline setup.



Make sure to read all safety information before operating your 3D printer.

## SUPPORT

Visit our Support page for troubleshooting guides and advanced information.

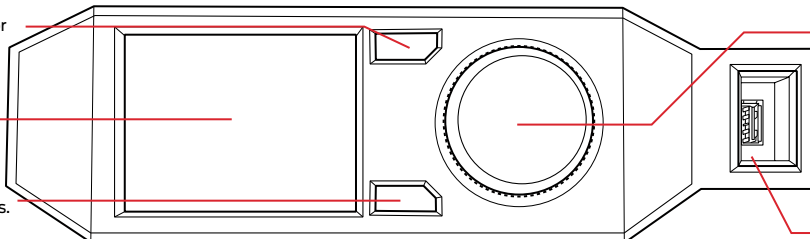
[support.makerbot.com](http://support.makerbot.com)

## 3 GET TO KNOW THE CONTROL PANEL

Push to go back or  
cancel an action.

LCD Screen

Push to see  
additional options.



Rotate to scroll.  
Push to select.

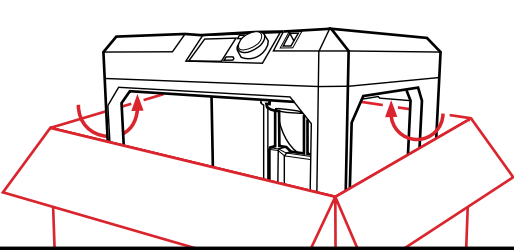
USB Port

→ SEE REVERSE SIDE FOR OFFLINE SETUP

# MakerBot Replicator+ OFFLINE SETUP

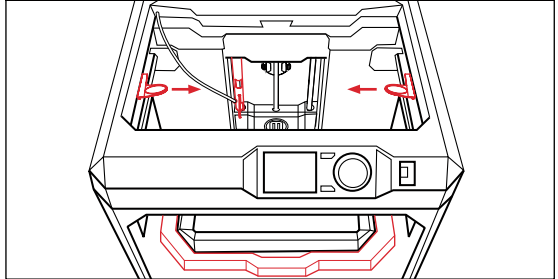
➔ PLEASE BEGIN ON THE REVERSE SIDE

**1 GRASP SIDES OF THE REPLICATOR+ AND LIFT OUT OF BOX**

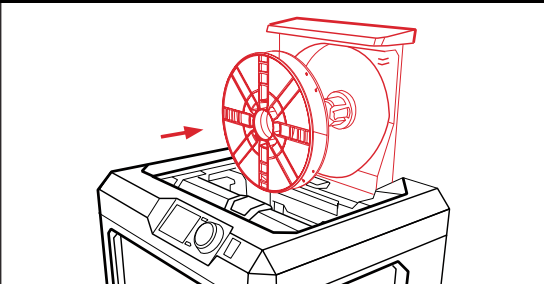


The MakerBot Replicator+ is heavy. You may need help lifting it out of the box.

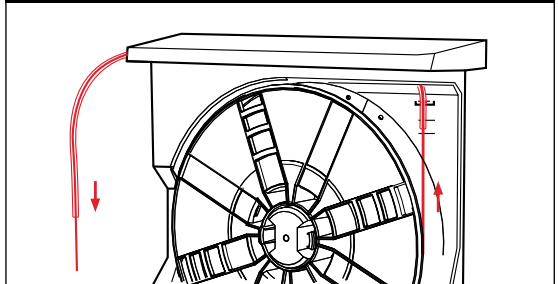
**2 REMOVE CLIPS FROM BELT AND ROD REMOVE FOAM FROM UNDER PLATE**



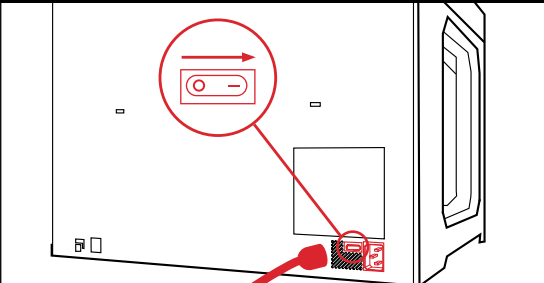
**3 LIFT DRAWER & INSTALL FILAMENT**



**4 ROUTE FILAMENT THROUGH GUIDE TUBE AND CLOSE DRAWER**



**5 PLUG IN POWER CORD AND POWER ON**



**6 FOLLOW INSTRUCTIONS ON CONTROL PANEL SCREEN**

